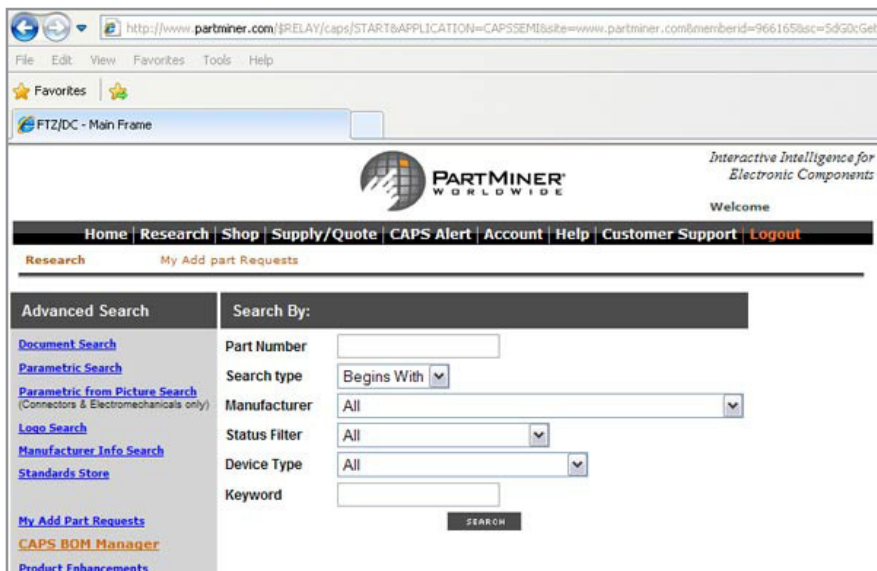
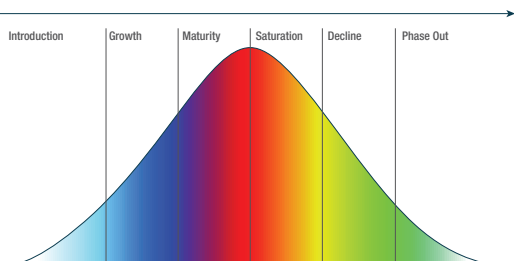




CAPS™ Expert | Research, Analyze, Select



- Perform parametric, keyword, and part number searches
- Easily find and select cross-referenced parts
- Validate component selection, identify alternates, monitor part availability and life-cycle, and ensure compliance (RoHS and REACH)
- Compare attributes with side-by-side comparison of electronic components
- BOM Alert Manager



Lifecycle Forecast:

Use CAPS Expert to access PartMiner's lifecycle forecasting algorithm driven by PartMiner technical information and market data.

Navigate the world's supply of electronic components and component data on over 160 million electronic components from your **Web Browser!!!**

About Us

PartMiner WorldWide Inc. provides electronic component procurement services to thousands of electronic manufacturing companies around the world. PartMiner collects and interprets worldwide market intelligence and component data from manufacturers, distributors, and other supply sources. PartMiner's CAPS database is the leading source of technical information in the industry delivering complete data sets on more than 150 million individual electronic components from more than 1800 active manufacturers.

PartMiner is headquartered in Centennial, Colorado, USA and has US offices in New York, California, Florida and Massachusetts. International locations include Brazil, China (Shenzhen, Shanghai, Suzhou, Beijing, and Hong Kong), France, Germany, India, Israel, Mexico, Singapore, Sweden, and the United Kingdom.

Corporate Headquarters

Centennial, Colorado
7807 East Peakview Avenue
Suite 400

Centennial, Colorado 80111

P: (303) 200-5567

TF: (800) 501-8565

F: (303) 200-5556

E: CAPS@partminer.com